

Technical Specification

Y2285

806-960 MHz 8.6dBd Gain

YAGI ANTENNA

High Performance: These antennas provide 8.6dBd, wide band performance.

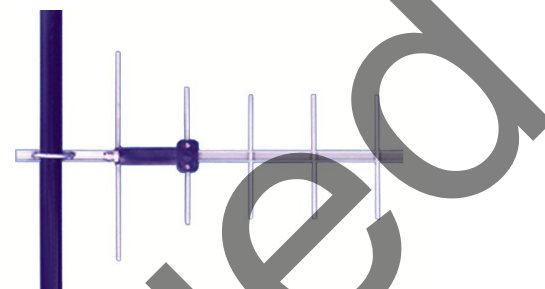
Rugged and weatherproof: The construction of our standard duty yagis feature 1/2"aluminum U channel with 1/4" solid elements. All exposed areas are coated with UV polyester. The balun assembly is filled and sealed with elastomeric thermoplastic.

Lightweight and Durable: These antennas are easily installed by one person.

Termination Options:

Type A: 12" Teflon pigtail with N connector.

Type B: Direct TNC connection to the balun.



ELECTRICAL SPECIFICATIONS:

GAIN: 8.6dBd F/B 18dB

FREQUENCY:
 -06 806-896MHz <2:1 VSWR
 -24 824-896MHz <2:1 VSWR
 -96 896-960MHz <2:1 VSWR
 -915 900-930MHz <2:1 VSWR

VERT BEAMWIDTH: 55°

HORIZ BEAM WIDTH: 60°

RATING : 150 watts, 50 ohms impedance

MECHANICAL SPECIFICATIONS:

MATERIAL: 1/2" (1.27cm)aluminum U channel boom

1/4" (6.3mm)solid elements

FINISH: UV inhibited polyester coat

LENGTH: 21" (53cm)

WEIGHT: <2 lbs. (907g)

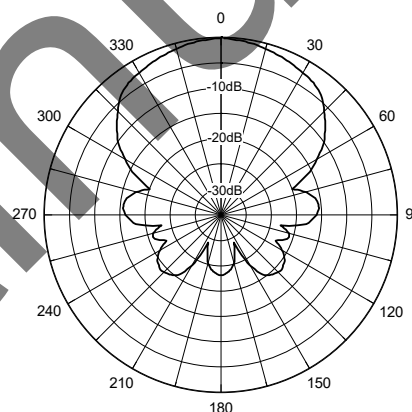
MOUNT: 1 5/8" (1.5cm)mast, stainless hardware

FLAT PLATE AREA: .11 ft²

WIND RATING: 125 MPH (201kph)

WIND LOAD: 6.8 lbs.(3.kg)

Horizontal Pattern



Vertical Pattern

