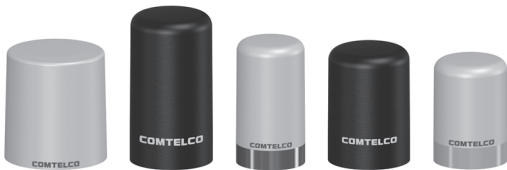
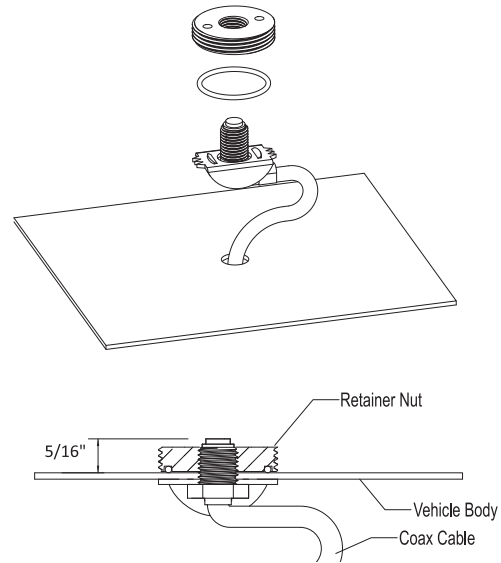


Low Profile Mobile Antennas—A16XX & A46XX Series Antennas



INSTALLATION INSTRUCTIONS FOR MOBILE MARK "C" MOUNT IN 3/8" (9.5mm) OR 3/4" (19mm) HOLE



ASSEMBLY INSTRUCTIONS

This series of antennas have been designed so that no tuning is necessary for optimum performance. They are shipped from the factory fully tested and should provide years of dependable service.

To install:

These antennas need to be installed on a flat surface that provides a good ground plane. No cutting or tuning is required to achieve proper performance.

If it is being used to replace an existing antenna that is installed on a standard NMO or TAD type mount, it can be screwed on the existing mount.

If it is a new installation, the same procedures for mounting a standard NMO or TAD type mount kit should be followed. This antenna works very well with the Comtelco C mount which can be mounted using a 3/8" (9.5mm) hole and provides a good 50 ohm constant impedance which is especially important for coverage up to 1970 MHz.

Antenna Mounting

The best performance is always obtained by positioning the antenna at the center of the vehicle roof. Other options include a rear trunk deck or fender. These options do not provide optimum performance but may allow acceptable results.

Most antennas require a good ground plane for optimum performance. Poor ground planes and improper mounting position may cause less than optimum results.

Drill a 3/8" (9.5mm) or 3/4" (19mm) hole in the car body at the desired location. Clean any burrs and paint from the area around the edge of the hole.

For a 3/4" (19mm) hole, route coax from the outside of the car through the hole. Tilt the mounting assembly at a slight angle and insert it into the hole.

For a 3/8" (9.5mm) hole, the assembly must be fed through the underside of the mounting surface. When mounting through a heavy wall material or a fiberglass body the stainless-steel saddle should be discarded.

Thread the retaining nut with the "O" ring in position on the stud. Tighten the retaining nut making sure the "O" ring becomes compressed enough for the retaining nut to come in contact with the mounting surface.

ATTENTION: Always wear safety glasses and follow the proper safety practices when installing this antenna.

WARRANTY

Mobile Mark, Inc. (Seller) warrants to Buyer that the products for a period of two years from the date of shipment will be free from defects in material and workmanship, and will be in accordance with specifications referred to herein. Seller's sole obligation under these warranties will be limited to either, at Seller's option and expense, repairing, or furnishing a replacement F.O.B. First point of shipment for the products or parts thereof which Seller reasonably determines do not conform with these warranties, and Buyer's exclusive remedy for breach of any of such warranties will be enforcement of such obligations of Seller. THE FOREGOING WARRANTIES ARE EXCLUSIVE AND IN LIEU OF ALL OTHER WARRANTIES OF MERCHANTABILITY, FITNESS FOR PURPOSE AND OF ANY OTHER TYPE, WHETHER EXPRESS OR IMPLIED. IN NO EVENT SHALL SELLER BE LIABLE FOR CONSEQUENTIAL DAMAGES, nor shall Seller's liability on any claims for damages arising out of or connected with the sales contract for the manufacture, sale, delivery or use of the products exceed the purchase price of the products. Any action for breach of warranty must be commenced within one year after the cause of action accrues.